



PLAZA AT THE SPEEDWAY

Junior Anchor Space Available next to Planet Fitness
I-435 & Parallel | 10500 Parallel Pkwy, Kansas City, KS

AVAILABLE
FOR
LEASE



18,331 SF JUNIOR ANCHOR SPACE AVAILABLE

DEMOGRAPHICS

Drive Time	5 min	10 min	20 min
Estimated Population	5,889	30,825	283,940
Avg. Household Income	\$109,832	\$99,814	\$107,724

- 850,000 sq ft Power Retail Shopping Center anchored by Walmart Supercenter, Kohl's, and Sam's Club. In a major tourism hub, drawing over 22 million visitors annually. Directly across the Street from Legends Outlet Exclusive Designer Shopping Center
- 18,331 SF Available For Lease with High-Traffic Premium Retail and Entertainment Synergy. Adjacent to Planet Fitness - surrounded by top-tier national brands like Chick-fil-A, Yard House, Coldstone Creamery, AMC IMAX Theaters, Nike Factory Store, Kate Spade, Under Armour, and H&M
- Unmatched Regional Demand Generators include Kansas Speedway, Cabela's, Great Wolf Lodge, Nebraska Furniture Mart, KC Monarchs Baseball Stadium, Children's Mercy Park Soccer Stadium, Homefield Youth Sports Facility, and Hollywood Casino. Explosive Growth and New Developments (Announced or Under construction) include Bu-Cee's, American Royal Complex, Mattel Adventure Park, Margaritaville Resort, and more!



CLICK HERE TO VIEW MORE
LISTING INFORMATION

For More Information Contact:

Exclusive Agents

MAX KOSOGLAD | 816.412.7363 | mkosoglad@blockandco.com

ALEX BLOCK | 816.412.7373 | ablock@blockandco.com

DAVID BLOCK | 816.412.7400 | dblock@blockandco.com

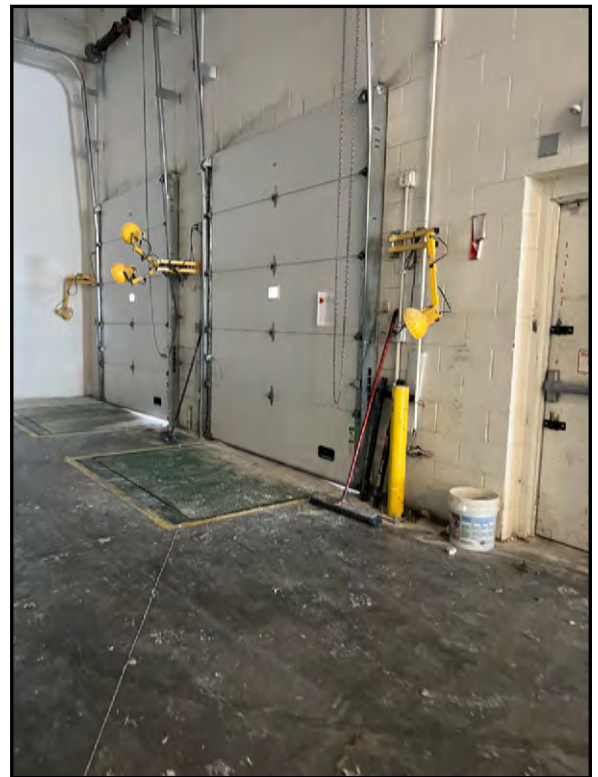


PLAZA AT THE SPEEDWAY

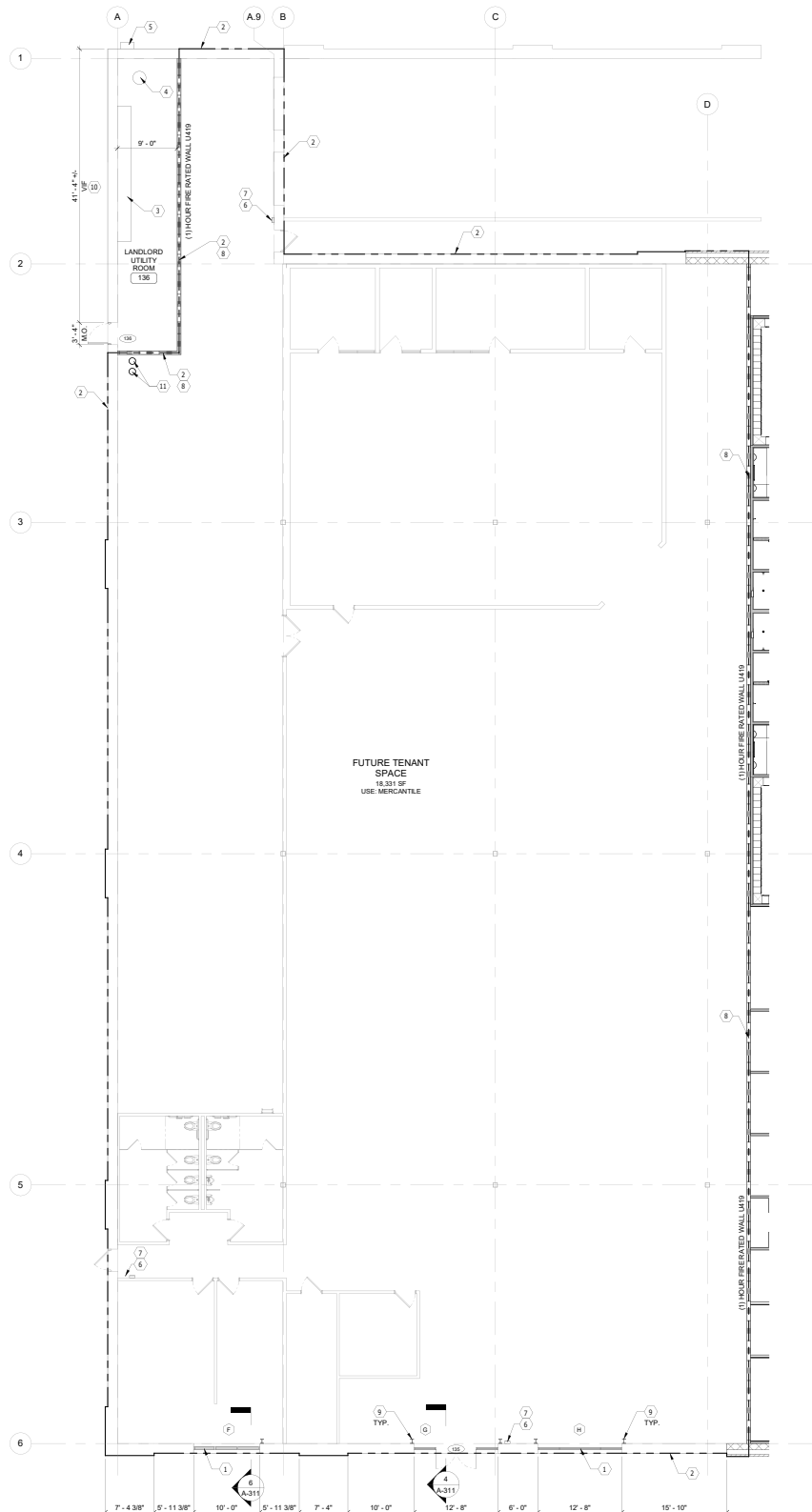
Junior Anchor Space Available next to Planet Fitness
I-435 & Parallel | 10500 Parallel Pkwy, Kansas City, KS

AVAILABLE
FOR
LEASE

PHOTOS



FLOOR PLAN





PLAZA AT THE SPEEDWAY

Junior Anchor Space Available next to Planet Fitness
I-435 & Parallel | 10500 Parallel Pkwy, Kansas City, KS

AVAILABLE
FOR
LEASE

DRONE PHOTOS



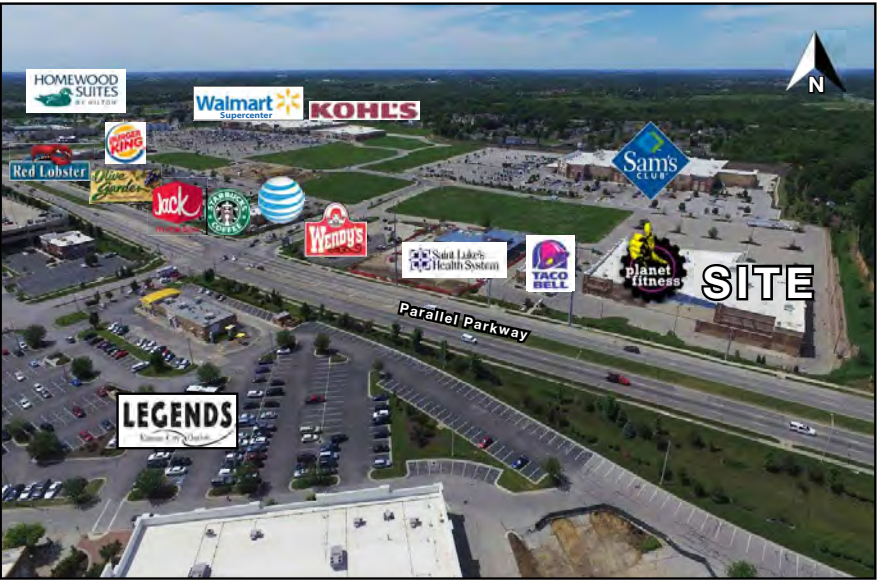


PLAZA AT THE SPEEDWAY

Junior Anchor Space Available next to Planet Fitness
I-435 & Parallel | 10500 Parallel Pkwy, Kansas City, KS

AVAILABLE
FOR
LEASE

DRONE PHOTOS





**AVAILABLE
FOR
LEASE**

[illegible]

AREA VISITATION



Sporting Park: The Sporting Kansas City soccer team opened its brand new, state-of-the-art 342,000 square foot Sporting Park on June 9, 2011. The \$200 million venue is one of the best soccer stadiums of its size in the world. Sporting Park, the first major league professional sports stadium in the state of Kansas, is part of a development plan that also includes a nearby tournament-quality athletics complex with 18-24 fields and associated amenities to host national, regional and local youth and adult soccer tournaments, camps, leagues, practices and games.



The Kansas Speedway: The Midwest's premier auto sports venue, and features NASCAR, IRL & Craftsman Truck events. The Speedway seats 82,000 and has infield space for 750 motor coaches. International Speedway also has committed to asking NASCAR for a 2nd Sprint Cup Series race at Kansas Speedway and to build a new road course.



Hollywood Casino at Kansas Speedway: The first phase opened in early 2012 and features a 100,000 SF casino floor, a lounge, and several dining and entertainment concepts. A later phase is planned to include a hotel, more gambling space, a spa, a convention center, and an entertainment retail district.



Destination KCK (Mattel Adventure Park): Destination KCK is an all-new, 180-acre entertainment development in Kansas: unique, fully themed lakeside resort that contains a mix of hospitality, retail, and leisure activities. The Mattel Adventure Park will be an entertainment destination that brings together iconic Mattel franchises, immersing guests in rides and attractions designed to thrill, excite, and create epic memories.



KC Monarchs: The Kansas City Monarchs are a professional baseball team based in Kansas City, Kansas. Formerly known as the Kansas City T-Bones, they are members of the American Association of Professional Baseball; which, in 2020, became designated as a Major League Baseball partner league. Legends Field located in Village West is the home of the Kansas City Monarchs Baseball Club, which attracts many events and family activities.



American Royal Association: The new \$350 million dollar development of 127 Acres will span more than 390,000 square feet. The facility will include three arenas, a state-of-the-art learning and engagement center and 100 acres of space for livestock shows. The Unified Government officials believe the new facility will account for an estimated 4,900 new jobs, draw 2 million visitors a year and provide \$526 million in economic growth over a 20-year period. The Complex will be the new home of the American Royal BBQ Competition which is held annually in October and brings around 50,000 attendees.



Compass Minerals National Performance Center: The training home for Sporting Kansas City and the United States Soccer Federation. The 50 acre complex is located south-east of 98th Street and Parallel Parkway. The facility includes 5 state-of-the-art soccer fields and the world's first "SuperPitch." Three side-by-side-by-side full-size soccer fields. Two of the full-size, synthetic turf fields feature LED sports lighting and surround a two-story "Coaching Pavilion" containing classrooms, camera positions and an observation deck. The facility also includes a sport performance lab and gymnasium, a U.S. Soccer coaching education center, and event spaces.



Homefield: An \$838 million youth sports facility consisting of eight baseball fields, along with a \$60 million indoor multi-sport facility featuring volleyball and basketball courts, parent lounges, and more. Additionally, plans include a Margaritaville-themed hotel, immersive art museum, multisport arena, and BigShots Golf facility, all aimed at enhancing the family sports tournament experience.



Great Wolf Lodge: A full-service, year-round family destination resort featuring: 281 family sized suites, a 49,000 square-foot indoor entertainment area including a water park, themed, family restaurant, spa, arcade, meeting / conference space, confectionery café, fitness center and gift shop.



Cabela's: Featuring museum-quality wildlife displays and large aquariums, Cabela's destination retail stores reinforce an outdoor lifestyle image and provide exciting tourist and entertainment shopping experiences for the entire family. The 188,000 sf Kansas City store had over 4 million visitors in one year.



Nebraska Furniture Mart: A true success, Nebraska Furniture Mart is America's largest home furnishings store and occupies more than one million square feet of space.



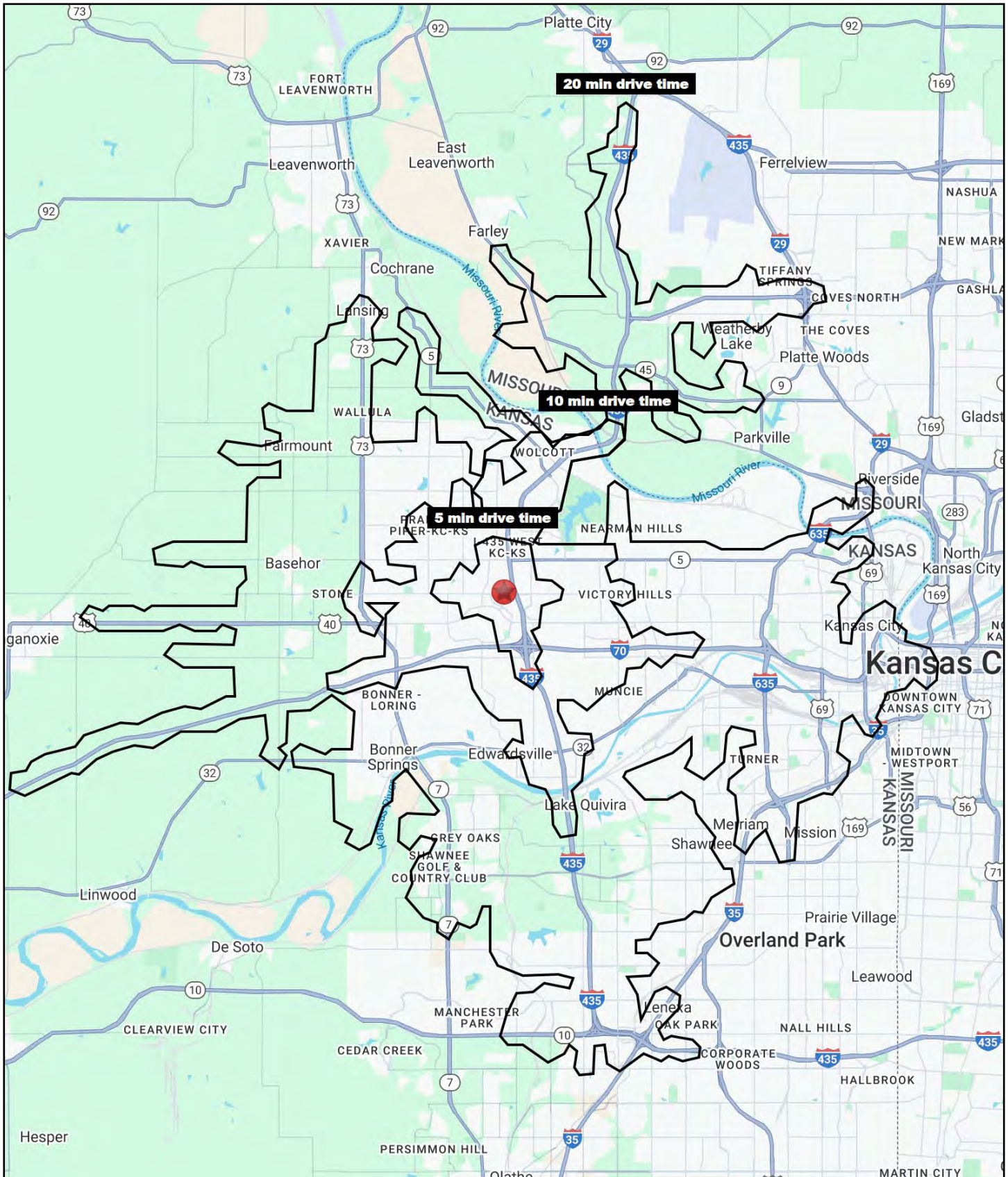
Dairy Farmers of America: The Kansas City area's largest private company, is headquartered in the Village East area located at the southeast quadrant of I-435 & Parallel Parkway. The three-story 110,000 square foot building brings 325 employees to the area.



PLAZA AT THE SPEEDWAY

Junior Anchor Space Available next to Planet Fitness
I-435 & Parallel | 10500 Parallel Pkwy, Kansas City, KS

AVAILABLE
FOR
LEASE





PLAZA AT THE SPEEDWAY

Junior Anchor Space Available next to Planet Fitness
I-435 & Parallel | 10500 Parallel Pkwy, Kansas City, KS

AVAILABLE
FOR
LEASE

10500 Parallel Parkway Kansas City, KS 66109	5 min drive time	10 min drive time	20 min drive time
Population			
2024 Estimated Population	5,889	30,825	283,940
2029 Projected Population	6,832	31,889	287,167
2020 Census Population	6,327	31,690	282,958
2010 Census Population	3,467	25,721	257,023
Projected Annual Growth 2024 to 2029	3.2%	0.7%	0.2%
Historical Annual Growth 2010 to 2024	5.0%	1.4%	0.7%
2024 Median Age	39.3	37.6	36.2
Households			
2024 Estimated Households	2,552	12,138	110,395
2029 Projected Households	2,981	12,648	112,522
2020 Census Households	2,238	11,987	107,423
2010 Census Households	1,259	9,866	97,361
Projected Annual Growth 2024 to 2029	3.4%	0.8%	0.4%
Historical Annual Growth 2010 to 2024	7.3%	1.6%	1.0%
Race and Ethnicity			
2024 Estimated White	62.1%	54.4%	62.4%
2024 Estimated Black or African American	18.7%	23.0%	14.1%
2024 Estimated Asian or Pacific Islander	5.4%	7.1%	4.8%
2024 Estimated American Indian or Native Alaskan	0.5%	0.6%	0.7%
2024 Estimated Other Races	13.4%	14.9%	18.0%
2024 Estimated Hispanic	17.2%	19.2%	21.3%
Income			
2024 Estimated Average Household Income	\$109,832	\$99,814	\$107,724
2024 Estimated Median Household Income	\$89,337	\$82,158	\$85,923
2024 Estimated Per Capita Income	\$47,831	\$39,430	\$41,990
Education (Age 25+)			
2024 Estimated Elementary (Grade Level 0 to 8)	2.7%	4.2%	5.3%
2024 Estimated Some High School (Grade Level 9 to 11)	1.9%	6.0%	5.8%
2024 Estimated High School Graduate	24.9%	26.8%	23.2%
2024 Estimated Some College	24.6%	22.1%	19.8%
2024 Estimated Associates Degree Only	8.7%	10.7%	9.1%
2024 Estimated Bachelors Degree Only	22.4%	17.9%	23.2%
2024 Estimated Graduate Degree	14.9%	12.3%	13.6%
Business			
2024 Estimated Total Businesses	306	936	8,772
2024 Estimated Total Employees	3,760	16,123	124,496
2024 Estimated Employee Population per Business	12.3	17.2	14.2
2024 Estimated Residential Population per Business	19.3	32.9	32.4

©2025, Sites USA, Chandler, Arizona, 480-491-1112 Demographic Source: Applied Geographic Solutions 11/2024, TIGER Geography - RS1